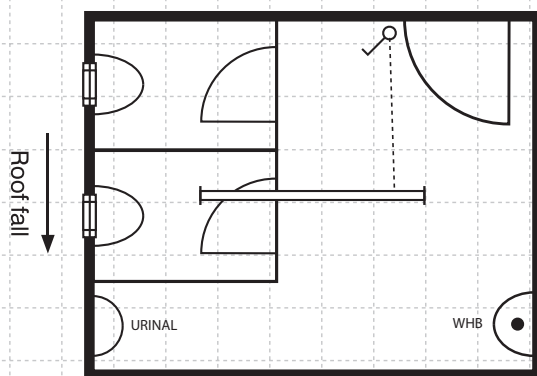


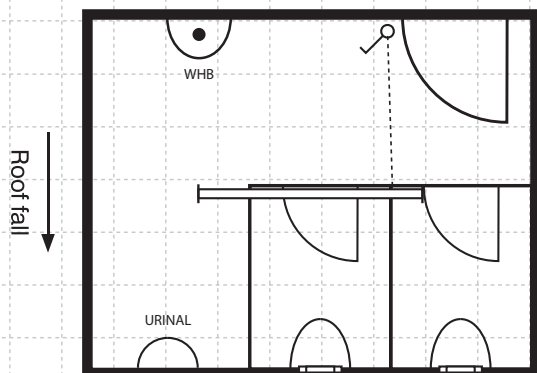


TOILET BUILDINGS

3.0 m x 2.4 m



OR



Features

Our buildings have the following features:

- Strong steel base frame.
- Insulated panel walls and ceilings, (maintenance free and hard wearing, warm in winter and cool in summer).
- Vinyl flooring.
- Aluminium sliding windows.
- Sturdy doors with deadbolts.
- Lifting hooks for easy delivery and manoeuvrability.
- Built in lights ready for your connection on site.

Options

- 3m x 2.4m with two toilets and one urinal
- 4.2m x 2.4m with three toilets and two urinals
- 4.2m x 2.4m with two toilets, one urinal and separate 'womens'

JustSheds

Aaron Power

Mob 027 552 6369

Ph 0800 555 508

Email aaron@justsheds.co.nz

PO Box 137355, Parnell, Auckland 1151

Scale 1:50



Flourescent light



Light switch



Double power point



Main switchboard



Sliding window



Entry point

Specifications are subject to change without notice.