

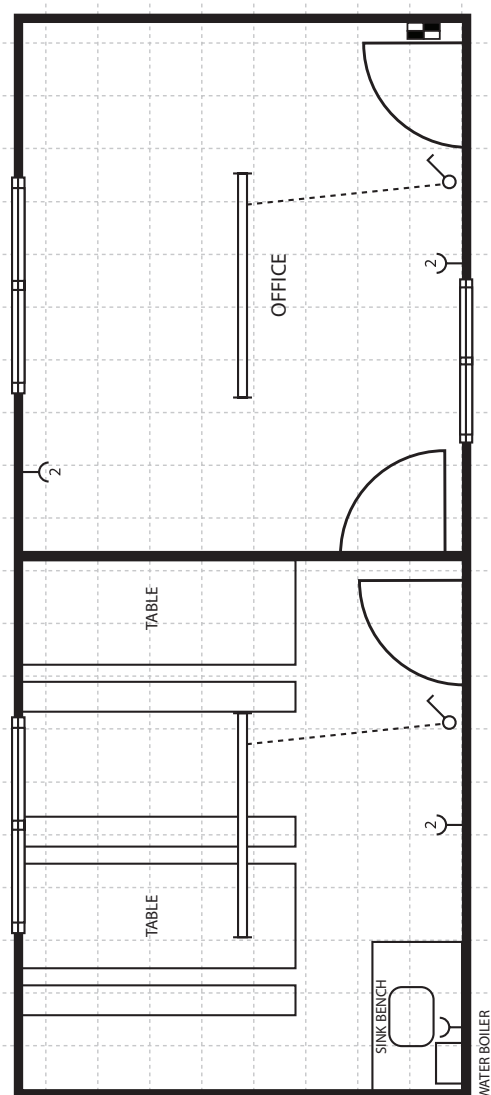
JustSheds

» PORTABLE BUILDING HIRE



COMBO BUILDING

7.2 m x 3.0 m



Features

Our buildings have the following features:

- Strong steel base frame.
- Insulated panel walls and ceilings, (maintenance free and hard wearing, warm in winter and cool in summer).
- Vinyl or carpet flooring, (to suit your requirements).
- Aluminium sliding windows (security grills optional).
- Sturdy doors with deadbolts.
- Lifting hooks for easy delivery and manoeuvrability.
- Built in power points and lights ready for your connection on site.
- Built in tables, bench seats, zip units, sink benches etc.

Options

- 6m x 3m office and toilet combo
- 7.2m x 3m lunchroom (9 person) and office combo

JustSheds

Aaron Power

Mob 027 552 6369

Ph 0800 555 508

Email aaron@justsheds.co.nz

PO Box 137355, Parnell, Auckland 1151

Scale 1:50



Flourescent light



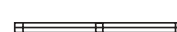
Light switch



Double power point



Main switchboard



Sliding window



Entry point

Specifications are subject to change without notice.

www.justsheds.co.nz

☎ 0800 555 508